



Community
Health
Association of
Mountain/
Plains
States

www.CHAMPSonline.org

Spring 2012 Quarterly Newsletter

Published May 24, 2012

Mark Your Calendar, Share Your Success

[CHAMPS/NWRPCA Annual Primary Care Conference Oct. 14-17, 2012](#)

CHAMPS and Northwest Regional Primary Care Association (NWRPCA) will hold their combined Regions VIII and X Annual Primary Care Conference:



Sun., Oct. 14 -Wed., Oct. 17, 2012
in **Denver, CO**
at the **Westin Denver Downtown.**

The conference will include clinical, operations/IT, fiscal, human resources/workforce, policy, and governance tracks aimed to provide health centers in the Mountain/Plains and Pacific Northwest states with educational and networking opportunities so they can best serve their communities. *CHAMPS and NWRPCA are seeking innovative program and best practice abstracts to fill the conference with impactful sessions.*

**WE'LL SEE
YOU IN DENVER!**

ABSTRACT THEMES

We are particularly interested in abstracts related to:

- ★ Health Care Reform
- ★ Patient-Centered Medical Home
- ★ Outcome Measures
- ★ Expanding Services at CHCs
- ★ Recruitment and Retention (see page 6)
- ★ Meaningful Use
- ★ Public Health/Primary Care (see page 9)
- ★ Clinical Topics Including Diabetes and Hypertension (see page 9)
- ★ Telemedicine
- ★ Behavioral Health Integration (see page 9)
- ★ Emergency Preparedness

Submit presentation ideas by June 8th
on the online abstract portal:
www.nwrpca.org/abstracts

Ready, Set, GROW!

Health Centers in Region VIII Awarded Nearly \$42 Million to Expand Access to Underserved

On May 1, the Health and Human Services Administration (HHS) announced that nearly 400 health centers across the country were awarded \$728 million to provide an additional 860,000

patients with services through expansion and improvement. Fifteen Region VIII health centers received a total of nearly \$42 million to build new sites or improve current sites.

Story continued on page 2, "Health Center Expansion"

INSIDE THIS ISSUE:

- **CHAMPS News (pg. 2-3):** Region VIII Grant Awards, CHAMPS 2012-2013 Membership, Region VIII Award Recipients, Upcoming Collaborative Course, Board Education Videos and Resources, Migrant Farmworker Conference Review
- **Workforce News (pg. 4-7):** Mid-Level Manager Training Review, Salary Survey Data Requested, CHAMPS JOB Report, Online Public Health Career Tool, NHSC Job Center, WICHE Reduced Tuition Programs
- **Clinical News (pg. 8-10):** UpToDate GPO, New CHAMPS QI, Behavioral, and Oral Health Online Resources, New MPCN Steering Committee Members, STD/HIV Prevention Upcoming Training Conference, Million Hearts Initiative
- **Regional and National News (pg. 11-13):** CACHIE Award, ICD-10 Conversion Extension, BPCCH PCMH Information Session, Fenway LGBT Education Resources, Community Health Calculator, National Health Center Week, Community Health Vote

Health Center Expansion

Region VIII Building Capacity and Facility Improvement Grants

\$38,647,863

in Building Capacity Grants

Bullhook Community Health Center, Inc. - MT
 Colorado Coalition for the Homeless - CO
 Cooperative Health Center- MT
 Denver Health Community Health Services - CO
 Horizon Health Care, Inc. - SD
 Salud Family Health Centers - CO
 Sunrise Community Health - CO
 Partnership Health Center - MT
 Wasatch Homeless Health Care, Inc./4th St. Clinic - UT

\$3,346,968

in Immediate Facility Improvement Grants

Clinica Family Health Services - CO
 Community Health Partners, Inc. - MT
 Partnership Health Center - MT
 Peak Vista Community Health Centers - CO
 Plains Medical Center, Inc. - CO
 Metro Community Provider Network - CO
 Mountainlands Community Health Center - UT
 Salud Family Health Centers - CO
 Sunrise Community Health - CO

The Building Capacity Grant and Immediate Facility Improvement Grant awards are the first wave of \$11 billion allocated to health centers in the Affordable Care Act to expand services and support major construction projects over five years. Health center growth in the Mountain/Plains states will reduce access barriers, create jobs, and improve health center facilities in preparation for drastic increases in service demand.

"Every penny of this new investment brings real benefits for more Americans, such as better health and more jobs...It means working families will have improved access to an effective primary care model where the care is locally-directed and patient-driven," said Tom Van Coverden, President and CEO of the National Association of Community Health Centers (NACHC) in a [May 1, 2012 press release](#) from NACHC.

See a list of the Region VIII health centers awarded expansion grants on the left.

View the [HHS News Release from May 1, 2012](#).

View all [Building Capacity Grant Awards](#).

View all [Immediate Facility Improvement Grant Awards](#).



CHAMPS 2012-2013 Membership

CHAMPS thanks the Community Health Centers (CHCs) and Primary Care Associations (PCAs) that have recently paid membership dues to become **2012-2013 CHAMPS Organizational Members**. The benefits of CHAMPS Organizational Membership extend to all staff and board members, including:

- ★ **FREE** participation in **webcasts and teleconferences** and CME credit
- ★ **DISCOUNTED** registration for **trainings, conference, and other events**
- ★ Conference **TRAVEL REIMBURSEMENT** for qualifying clinicians
- ★ Conference **SCHOLARSHIP** opportunities
- ★ **FREE** access to the CHAMPS **Lending Library**
- ★ **DISCOUNT** on all CHAMPS **Products**

View [CHAMPS current Organizational Members](#).

PLEASE NOTE: 2011-2012 members enjoy a 60 day grace period in the new fiscal year. Member benefits for 2011-2012 members that have not paid 2012-2013 dues will expire on 06/01/12.

Congratulations to Region VIII Award Winners!

Region VIII Health Center Leaders Honored at NACHC 2012 Conferences



Pictured: Justin Wheeler, MD (left).
Photo courtesy of Maureen Maxwell,
CCHN.

Justin Wheeler, MD, a Physician from Valley-Wide Health Systems, Inc. in Center, CO was presented with the "Emerging Leader Award" for extraordinary service and leadership during the NACHC Policy and Issues Forum (P&I) in Washington, DC March 24, 2012. Two other Region VIII staff, **Carmen Aguirre** and **Rebecca Bien** from Peak Vista Community Health Centers in Colorado Springs, CO, were award finalists.

Mary Beth Frideres of the Montana Primary Care Association (MPCA) in Helena, MT received the Elizabeth K. Cooke Advocacy MVP Award named for the late Elizabeth K. (Betsey) Cooke at the NACHC P&I. The award honors those who went above and beyond in their efforts to ensure that their Members of Congress actively supported health Centers, or to establish and expand grassroots advocacy efforts at their health center or in their state last year.

Jerry Brasher, President/CEO of Salud Family Health Centers in Fort Lupton, CO received the Chairperson's Award from Kauila Clark, NACHC Chair of the Board, at the 2012 Farmworker Conference on May 10, 2012.

Your Opinion Matters.

Tell us what you think
about the CHAMPS
Quarterly Newsletter via
this brief survey so that we
can best meet your needs.

[Review the CHAMPS
Quarterly Newsletter
HERE.](#)



Upcoming Collaborative Course Supports Medical Home Initiative

*Clinical-Operations Collaboration Training
June 18-21 2012 in Seattle, WA*

A house divided cannot stand, and a medical home is no different. Medical homes are built through integration and teamwork, so a new training for health centers from CHAMPS, Northwest Regional Primary Care Association (NWRPCA), and the National Association of Community Health Centers (NACHC) seeks to enhance collaboration between the two pillars of patient services: clinical care and operations. The course was developed by two Harvard School of Public Health professors and will strengthen collaborative management skills such as provider productivity, recruitment and retention, performance compensation, and negotiation and conflict resolution.

The course will be held in Seattle, WA June 18-21, 2012 and the registration fee is \$3,500 per team (a team consists of one clinical leader and one operations leader). Space is limited to 30 teams and the deadline for registration is June 11, 2012.

For details and registration information, visit
[CHAMPS' Leadership Learning Opportunities Page: Enhancing
Collaborative Management in CHCs](#)
OR email julie@CHAMPSonline.org.

Educational Board Video Modules from NACHC

“Community health centers strive to be patient-centered. So if the patient really does come first, how does that impact your role as a board member?” This is just one question that the National Association of Community Health Center’s (NACHC) new on-line video training series aims to tackle with five video modules demonstrating health center and board meeting operations. The vignettes address many board-related questions and are accompanied by discussion resources to guide people through board meetings. NACHC also has an “All-A-Board” governance clearinghouse of resources that visitors can browse and download or contribute to.

How does a board add value?

What does it mean to be community based?

What’s my role as a board member?

Try Out These Board Member Resources:

[NACHC's Online Video Board Training](#)

[NACHC's Governance Resources](#)

[NACHC's All-A-Board: Governance Clearinghouse](#)

[CHAMPS' CHC Board Resources](#)

Honoring the Hands

50th Anniversary of Migrant Health Act, National Farmworker Health Conference

The Migrant Health Act, signed into law by President John F. Kennedy in 1962, celebrated its 50th anniversary at the 2012 National Farmworker Health Conference in Denver, CO this month. Migrant health centers serve nearly one million of the more than four million Migrant and Seasonal Farmworkers (MSFW) in the US with multilingual, culturally-competent care and community action.

CHAMPS Executive Director Julie Hulstein joined Colorado Community Health Network’s (CCHN) Chief Executive Officer, Annette Kowal in welcoming attendees and opening the conference. Speakers included **Dolores Huerta**, Co-Founder of the United Farm Workers (UFW) and recipient of the Presidential Medal of Freedom; **Kathleen Kennedy Townsend**, former Lieutenant Governor of Maryland and daughter of the late Senator Robert F. Kennedy; **Christine Chavez** of the US Department of Agriculture and granddaughter of Cesar Chavez; and **Fernando Chavez**, lawyer and son of Cesar Chavez. In addition to informative and participatory conference sessions, attendees from migrant health centers, partners, and friends of farmworkers across the nation were able to view archival documents and interviews with leaders in Migrant Health from the “Honoring the Hands” project, and tour Salud Family Health Centers’ mobile unit, training facility, and new clinic site. The 2013 National Farmworker Health Conference will be held at the Omni hotel in San Diego, CA May 7-10, 2013.



Visit the ["Honoring the Hands" website](#).
 Visit the [National Center for Farmworker Health website](#).
 Visit [NACHC's 2013 National Farmworker Health Conference webpage](#).
 Visit [CHAMPS' Migrant and Seasonal Farmworkers Resources webpage](#).

WORKFORCE DEVELOPMENT NEWS

Encouraging successful careers and strong, cutting-edge organizations by providing live and archived continuing education, recruitment and retention tools, and the latest information on current trends and statistics

Managers Gain Critical Skills, Inspired to Lead

Mid-Level Managers Kick Off Six-Month Hybrid Training from CHAMPS/NWRPCA

April marked the kick-off training for the first ever "Critical Skills for Mid-Level Managers" hybrid, six-month course to support health center supervisors lead successful teams in their clinics. The 32 participants from Region VIII and Region X at the two-and-a-half day face-to-face training gained communication, team leadership, employment law, recruitment and retention, and performance accountability skills to help them make a difference in their home health centers. They left the training inspired and committed to learn with their mentors, continue their friendships, and use their skills to implement a capstone project and make a difference in their health center.

Lead presenter Lisa Mouscher of Sogence Consulting, together with Lara Salazar of the Montana Primary Care Association and Salud Family Health Centers' Ann Hogan, convened an expert panel of speakers to facilitate the learning objectives. Among them were June Ramos, Dr. Virgilio Licon, and Chuck Passaglia. Lisa Mouscher will lead the participants in several additional webinars and teleconferences before the group reconvenes to present their projects at the CHAMPS/NWRPCA Annual Conference in October 2012.

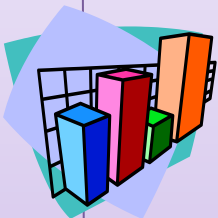


Pictured: Mid-level managers from Regions VIII and X at the face-to-face meeting in Denver in April 2012.

Visit the [CHAMPS Events and Trainings](#) webpage to learn more about upcoming and archived learning opportunities from CHAMPS.

Collecting Salary, Benefits, and Turnover Data for RVIII

CHAMPS and Region VIII State Primary Care Associations (SPCAs) have worked in collaboration since 2004 to design and distribute the Region VIII Health Center Salary, Benefits, and Turnover Survey. Published every two years, the survey informs the report that provides health centers with valuable information. Health centers may find the final report useful to:



- ★ Evaluate salary and benefits structures for all staff
- ★ Inform executive compensation questions
- ★ Help determine economic impact of health centers
- ★ Identify Region VIII health center workforce trends
- ★ View aggregated data that is completely confidential

CHAMPS hopes that all Region VIII community, migrant, and homeless health centers will participate in this opportunity to provide a regional snapshot of salary and benefits structures and workforce trends across the Mountain/Plains states. The 2012 survey was sent to health center Executive Directors, Finance Directors, and Human Resources contacts earlier this month, and **responses are due to CHAMPS by June 15th**. The final report will be published and available in October 2012.

Contact Andrea Martin, andrea@CHAMPSonline.org, with any questions about this project.

JUST RELEASED:

JOB Data Comparison Report Highlights Recruitment Trends

The CHAMPS online [Job Opportunities Bank \(JOB\)](#) is a free resource advertising career opportunities in Region VIII health centers and Primary Care Associations. CHAMPS compiles data submitted to JOB to create comparison reports of the health center-specific data from year to year. The annual reports illustrate recruitment efforts and trends throughout Region VIII, including types of positions recruited, average recruitment lengths, and successful recruitment resources. Highlights from the 2011-2012 data were:

- **REGION VIII HEALTH CENTERS UTILIZED JOB 28% MORE THAN PREVIOUS YEAR**
Forty-four different Region VIII CHCs advertised 296 career opportunities on JOB between February 2011 and January 2012 (a 28% increase from the previous year).
- **HEALTH CENTERS FILLED MOST POSITIONS FASTER THAN PREVIOUS YEAR**
Average recruitment time dropped for all position types (e.g., Admin/Mgmt, Medical, Clinical Support) EXCEPT for Behavioral Health for closed positions.
- **REGION VIII FILLED MORE POSITIONS OVERALL - EVEN CLINICAL PROVIDERS**
More than 54% of the health centers postings were reported as filled, an increase from the 43% of postings that were reported as filled in the previous year.
30% of physician postings were reported as filled, an increase from 16% the previous year, and more than 52% of NP/PA postings were reported as filled, an increase from 37% over the previous year.
- **DENTAL POSITIONS FILLED FASTER THAN OTHER CLINICAL POSITIONS**
Dentists and dental directors had the shortest average recruitment time (3.8 months – a significant drop from 11.5 months the previous year) of medical and dental postings that were closed and reported as filled.
- **PHYSICIAN AND MEDICAL DIRECTOR POSITIONS CONTINUED TO BE A CHALLENGE**
Physicians and Medical Directors maintained the longest average recruitment time (14.8 months, a 13.5% increase from last year's average of 13.0 months).
- **CANDIDATES FOUND CHC JOBS THROUGH JUST FOUR MAIN RESOURCES**
*The top four reported resources used by hired candidates were **online listings, internal hires, employee referrals, and local referral/word of mouth**, representing almost 90% of the known recruitment resources cited for filled postings.*
- **ONLINE LISTINGS WERE CRITICAL RESOURCES, ESPECIALLY ORGANIZATION'S WEBPAGES**
54.3% of successful candidates found their position through online listings, an increase from 39.4% in previous year (and up from 21.9% in the year before that).
Almost 50% of the hired candidates who found the posting online saw it on the health center's own website.

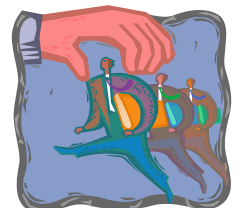
Download this year's report at the [CHAMPS Publications webpage](#).

To post a position on the CHAMPS Job Opportunities Bank, please contact stephanie@CHAMPSonline.org.

Is Your Organization a Recruiting Success?

Submit a Workforce Abstract for the 2012 Annual Conference

CHAMPS and the Northwest Regional Primary Care Association (NWRPCA) are seeking abstract submissions for the Workforce Track at the 2012 Annual Primary Care Conference to be held in Denver, CO October 14-17, 2012.



Submit an abstract showcasing a CHC Human Resources or Workforce success at www.nwrpca.org/abstracts. Visit the [CHAMPS Annual Conference](#) webpage for more information or email andrea@CHAMPSonline.org.

**I Am Public Health:
Post or Find a Career Path in Public Health**

The Association of Schools of Public Health (ASPH) recently launched a web application, "I Am Public Health," to enable job seekers to visualize a career in public health as part of the *This Is Public Health* campaign to promote awareness of the impact public health has on our daily lives. The application aims to answer the question: "What can I do with a degree in public health?" Users interact with an application that resembles a slot machine scrolling through specialties, employer types, and locations in the US and delivers a real public health practitioner profile such as "Research Epidemiologist" and "Safety and Occupational Health Specialist" complete with salary information, years of experience, and major responsibilities. Health center practitioners may submit their public health story to the *I Am Public Health* web app so that students can envision their career paths in community health.



Visit the [I Am Public Health web application](#) or Add your profile to the [I Am Public Health database](#) powered by SurveyMonkey.

NHSC Debuts New Online Jobs Center

The National Health Service Corps (NHSC) recently debuted a new online job search center to replace the former Job Opportunities List (JOL). The new Jobs Center allows NHSC-approved sites to tell job seekers about their clinics in their own words, including pictures and direct links. The Jobs Center has enhanced search options that allow providers to search for open positions across the US with images, mapping, and customized details including social media integration, patient demographic information, and more.

Sites are encouraged to update their information by using the Site Administrator Portal and clicking "Manage Site Profile."

Click to access the [NHSC Jobs Center](#).
Click to access the [NHSC Site Administrator Portal](#).



Reduced Tuition Program for Higher Education in the West

The Western Interstate Commission for Higher Education (WICHE) is a regional compact of Western states that offers reduced tuition rates through a variety of programs. The 15 participating states include AK, AZ, CA, CO, HI, ID, MT, NV, NM, ND, OR, SD, UT, WA, and WY. The program offers several cost-reduction programs for students seeking higher education in both health fields and others.

Program:	PSEP: Professional Student Exchange Programs	WRGP: Western Regional Graduate Program	WUE: Western Undergraduate Exchange
Who's Eligible:	<i>Clinical health profession seeking student residents of participating states</i>	<i>Graduate and Doctoral degree seeking student residents of participating states</i>	<i>Undergraduate degree seeking student residents of participating states</i>
Cost reduction benefits:	Reduced tuition rates at out-of-state public and private institutions for clinical education including dentists, physicians, physician assistants, physical therapists, optometrists, pharmacists and others.	In-state tuition for any of the 275 participating programs at 51 institutions in any WICHE state. Programs include: nursing, health professions, business, public health, mental health, public administration, and social services.	Reduced tuition, 150% of in-state tuition, outside of their home state at any of the 145+ participating institutions in any program.

Learn more about WICHE programs and activities at: www.wiche.edu.

MOUNTAIN/PLAINS CLINICAL NETWORK (MPCN) NEWS

Providing professional, administrative, and educational support to all clinicians that practice in Community, Migrant, and Homeless Health Centers in Region VIII to ensure the delivery of the highest possible quality of care to poor and underserved populations

Stay "UpToDate" with CHAMPS Group Purchasing Offer CHAMPS GPO Helps RVIII Clinicians Stay at the Forefront of Care, Affordably



CHAMPS re-opened the Group Purchasing Offer (GPO) for UpToDate in April 2012. UpToDate is an evidence-based information source for health care providers to use on computers and mobile devices. The point of care tool is used for referencing disease, treatment, drug, visual imaging, and other patient care information. UpToDate also offers continuing medical education (CME) credits to subscribers who perform clinical research or literature reviews.

Enrollment for the CHAMPS UpToDate GPO is open through November 1, 2012. CHAMPS organizational members can purchase subscriptions for \$419 (a savings of \$80 off the \$499 retail rate), plus a one-time \$15 processing fee, per individual subscription through the offer. Members who renew subscriptions in 2013 will save an additional \$30 off the retail renewal rate for a total savings of \$110 per subscription over a two-year period.

For more information visit the [CHAMPS UpToDate GPO webpage](#).

Contact Shannon Kolman, CHAMPS Clinical Programs Director, at shannon@CHAMPSonline.org or 303-867-9583 with any questions regarding the offer.

New Behavioral Health, Oral Health, and QI CHAMPS Resources



New CHAMPSOnline Resource!

CHAMPS has developed two new webpages packed with resources to aid health centers in providing quality, integrated health care: Oral Health Resources and Behavioral Health Resources. Additionally, CHAMPS added resources and updated the Quality Improvement Resources section on www.CHAMPSonline.org.

The new **Behavioral Health webpage** provides information for both behavioral and primary health care providers including current articles and evidence-based clinical guidelines addressing substance abuse, suicide prevention, depression, rural mental health, and much more. There are also provider tools including motivational interviewing, screenings, questionnaires, communication tips, and patient education materials.

- Visit [CHAMPS' Behavioral Health Resources webpage](#).

The new **Oral Health Resources webpage** provides resources for dental and primary care providers including evidence-based guidelines, operations and start up tools, patient education materials, and links to provider education and webinars. All resources provide valuable information for dental practice in the primary care setting.



- Visit [CHAMPS' Oral Health Resources webpage](#).

CHAMPS also added new information, links, and tools to the **Quality Improvement (QI) Resources webpage** including a brief history of QI in CHCs, links to all of CHAMPS' Patient-Centered Medical Home (PCMH) and Meaningful Use (MU) online resources, QI plan assistance resources, and links to new QI tools.

- Visit [CHAMPS' Quality Improvement Resources webpage](#).

*CHAMPS Welcomes
New MPCN Steering Committee Members and
Thanks All Members for Their Service!*

The Mountain Plains Clinical Network (MPCN) Steering Committee has two new members: **Chastity Dolbec, RN, BSN**, Clinical Quality Care Director with Coal Country Community Health Centers in North Dakota, and **Megan Littlefield, MD**, Medical Director with RiverStone Health Clinic in Montana. MPCN, the CHAMPS staff, and the MPCN Steering Committee members welcome Chastity and Dr. Littlefield and look forward to their input on the committee.

CHAMPS would also like to thank all the MPCN Steering Committee members for their participation on the committee. MPCN Steering Committee members include: **Patricia Carrick, FNP**, with Butte Community Health Center in Montana; **Chad Hess, PA-C**, with Pueblo Community Health Center in Colorado; **Keith Horwood, MD**, with Community Health Centers, Inc. in Utah; **Kim McFarlane, PA-C**, with Green River Medical Center in Utah; **Jim McNeely, CFNP**, with Rural Health Care, Inc. in South Dakota; **Pat Powell, MD**, with Sunrise Community Health in Colorado; **Larissa Tolley, DDS**, with Community Health Center of Central Wyoming; and **Marie Welton, DDS** with Salud Family Health Centers in Colorado. *Thank you for your continued support and input on the MPCN Steering Committee!*

The Steering Committee helps guide CHAMPS' clinical programs to ensure these programs meet the needs and challenges of MPCN. The committee is made up of four representatives from each state in Region VIII; two medical providers, one behavioral provider, and one oral health provider. **There are currently openings on the Steering Committee for a behavioral health provider from Colorado, a behavioral and oral health provider from Montana, South Dakota, and Utah, and a medical, behavioral and oral health provider from North Dakota and Wyoming.** The Steering Committee meets every-other-month by conference call.

Please contact Shannon Kolman, Clinical Programs Director at CHAMPS if you interested in joining the MPCN Steering Committee, at Shannon@CHAMPSonline.org or 303-867-9583, or see the [CHAMPS MPCN webpage](#) for more information about MPCN and the Steering Committee.

Clinical Abstracts Needed!	NEW Public Health Track Needs Abstracts
<p>CHAMPS, the Northwest Regional Primary Care Association (NWRPCA), and the Western Clinicians Network (WCN) are seeking abstract submissions for the clinical track of the 2012 Annual Primary Care Conference. Organizers are particularly interested in abstracts related to:</p> <ul style="list-style-type: none"> ➤ Behavioral Health Integration ➤ Patient Centered Medical Home ➤ Healthy People 2020 Goals ➤ Diabetes ➤ Hypertension ➤ Preventative Medicine <p>Submit an abstract highlighting best practices, challenges, opportunities, or new approaches to clinical issues in health centers at www.nwrpca.org/abstracts.</p> <p style="text-align: center;"><i>Contact Shannon Kolman at shannon@CHAMPSonline.org for information or visit the CHAMPS Annual Conference webpage for more information on the 2012 conference.</i></p>	<p>There will be a new Public Health and Primary Care track at the CHAMPS/NWRPCA 2012 Annual Conference. Born out of a recent report from the Institute of Medicine (IOM), the Health Resources and Service Administration (HRSA), and the Centers for Disease Control and Prevention (CDC), the new track aims to showcase:</p> <ul style="list-style-type: none"> ➤ Examples of successful public health and primary care partnerships ➤ Processes for public health integration ➤ Maternal and child health outcomes ➤ Cardiovascular health ➤ Preventative Medicine <p>Submit an abstract highlighting best practices, challenges, opportunities, or new approaches related to public health and primary care integration at www.nwrpca.org/abstracts.</p> <p style="text-align: center;"><i>Contact Stephanie Booker at stephanie@CHAMPSonline.org for information or visit the CHAMPS Annual Conference webpage for more information on the 2012 conference.</i></p>

STD/HIV Clinical Update and Overview Training

Registration is now open for the 24th Annual STD/HIV Clinical Overview and Update from the Denver STD/HIV Prevention Training Center (Denver PTC). The training includes continuing medical education (CME) credits and continuing nursing education (CNE) credits for the one day overview of Sexually Transmitted Diseases (STDs), including the Human Immunodeficiency Virus (HIV) and a two-day clinical update on STDs for clinicians. The training will be held at the Rita Bass Training Center in Denver, CO September 12-14, 2012.

The Denver PTC has provided innovative STD clinical training to Region VIII for more than 31 years. Co-located with the Denver Metro Health STD Clinic (DMHC), the largest STD Clinic in the Rocky Mountain Region, the Denver PTC is the only center in the nation to have a model STD clinic, nationally recognized HIV care and family planning clinics, HIV linkage to care programs, on-site partner services and both a clinical and a behavioral intervention PTC program all in one place. The Denver PTC is a stand-alone provider of Continuing Medical Education (CME) and Continuing Nursing Education (CNE) credit.

Register on the [Denver PTC's Clinical Training webpage](#).

- STD/HIV Overview (\$70 for one day training)
- STD/HIV Clinical Update (\$90 for two day clinical update)
- Cost: \$130 for both if registered by August 18, 2012

Heart Disease & Stroke are:

- ♥ The 1st and 4th leading causes of death in the U.S.
- ♥ 2 of the top 5 leading causes of death in Region VIII
- ♥ Responsible for 1 out of every 3 deaths in the country

Million Hearts™ Initiative Aims to Prevent Heart Attacks and Strokes

The Million Hearts™ Initiative is a national health campaign with the goal to prevent one million heart attacks and strokes by 2017 through **improved access to and quality of care**, clinical focus on **prevention**, promoting **heart-healthy lifestyles**, and improved prescription of and adherence to “**ABCS**” (aspirin for people at risk, blood pressure control, cholesterol management, and smoking cessation).

The website provides information for individuals; health care providers; consumer, community, and patient organizations; hospitals and healthcare organizations; employers and private sector companies; state, county, and local health officials; and pharmacists and pharmacies. The initiative was launched in 2011 by the Department of Health and Human Services (HHS) and is co-led by the Centers for Disease Control and Prevention (CDC), the Centers for Medicare and Medicaid Services (CMS), and many other community-based organizations, national non-profits, and businesses. The website includes online tools such as a heart attack risk calculator and heart health assessment.

Visit the [Million Hearts™ Initiative website](#).

CACHIE Wins Innovation Award

The Microsoft Health Users Group 2012 Innovation Award was given to the Colorado Community Managed Care Network (CCMCN) and PluralSoft in the category "Modernizing Health Systems and Information". The award recognizes solutions that improve care, enhance quality, and boost performance using information technology and business intelligence. CCMCN partnered with PluralSoft, a Denver-based data analytics company, to build the [Colorado Associated Community Health Information Enterprise](#) (CACHIE), a clinical quality reporting and analysis solution used to manage chronic

diseases and preventive care. CACHIE extracts data from electronic medical records and patient management systems within CCMCN's health centers and leverages Microsoft and other servers to improve data-driven processes and quicken information delivery. CCMCN has noted measurable improvements among CACHIE health centers in quality and productivity, including a 16 percent increase in children's immunization rates, increased grant awards, and an 85 percent reduction in staff time through improved workflow.

Read the [February 2012 Microsoft Health Users Group press release](#).

ICD-10 Conversion Deadline Extended

The Department of Health and Human Services (HHS) proposed a delay in the compliance date for coding conversion to the International Classification of Diseases, 10th Edition (ICD-10) for medical diagnosis and inpatient procedures code. The ICD-10 compliance date will be delayed from October 1, 2013 to October 1, 2014. The ICD-10 conversion from ICD-9 affects diagnosis and inpatient procedure coding covered by the Health Insurance Portability and Accountability Act (HIPAA) and everyone covered by HIPAA who transmits electronic claims.

Official Centers for Medicare and Medicaid Services (CMS) resources are available on the www.cms.gov/ICD10 website including [implementation timelines and a downloadable Widget](#) to assist large and small providers with upcoming deadlines.

PCMH Information Session: HRSA's Quality Initiatives – Which one is right for your grantee?

The Bureau of Primary Health Care (BPHC) is responding to questions from health center program grantees about which patient-centered medical home initiative is appropriate for their health center. BPHC is offering an informational session on the topic with representatives from the Accreditation Association for Ambulatory Health Care (AAAHC), The Joint Commission, and the National Committee for Quality Assurance (NCQA), to review the differences and benefits of the various accreditation/recognition processes. Representatives from the Office of Quality and Data will also discuss the enrollment procedure for the initiatives and expectations of becoming a medical home.

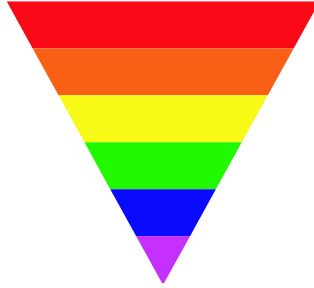


May 30, 2012, 11:00 a.m.-12:30 p.m. MT/12:00 p.m. – 1:30 p.m. CT
Call-in Number: **800-475-0512**
Participant Code: **QUALITY**

View the [BPHC Information Session Announcement](#).

Fenway LGBT Health Education Center T/TA

The Fenway Institute was recently funded by the Health Resources and Services Administration to provide training on Lesbian, Gay, Bisexual, and Transgender (LGBT) health care to health centers. The Fenway Institute will offer on-site trainings, lead seminars and webinars, consult with clinicians and administrators, develop materials and curricula addressing fiscal and program management, and work with primary care associations on health center LGBT health efforts.



“Many LGBT people use community health centers for their care, but staff often lack training in how to work with them,” said Harvey Makadon, MD, the Fenway Institute’s Director of Professional Education and Development in a press release on September 7, 2011. Makadon added that the goals of the program are to equip providers to talk openly with patients so they may deliver comprehensive care and assist health center administrative staff to create LGBT-friendly environments. The Fenway Institute recently ran an interactive training workshop on optimizing LGBT health care for the homeless programs at the National Health Care for the Homeless Council Conference & Policy Symposium.

The Institute of Medicine released a report last year outlining the unique health disparities of LGBT people and recommended additional training and research on LGBT health. LGBT are often at an increased risk of depression and have other unique health disparities.

Visit [The Fenway Institute’s website](#) or view the [September 2011 Press Release](#).
Access IOM’s report on LGBT health issues:
[“The Health of Lesbian, Gay, Bisexual, and Transgender People: Building a Foundation for Better Understanding.”](#)

Calculator Illustrates Disparities by Education, Income

An interactive web application from the Robert Wood Johnson Foundation (RWJF) and Virginia Commonwealth University’s Center on Human Needs illustrates how schools, workplaces, and neighborhoods and other social determinants of health impact mortality and diabetes in communities. The web app, the County Health Calculator, is based on the US Census Bureau and the US Department of Health and Human Services data for 3,000 counties and is meant to be used by advocates and policy makers to demonstrate the impact of social determinants of health. Users can input a location in the US into the calculator and receive an interactive snapshot of deaths per year, persons with diabetes, and diabetes costs in the county which can then be manipulated based on education (percent of adults with some college education) and income (percent of adults with an income twice the federal poverty level). The tool also compares counties side by side.



In the United States, 121,750 lives could be saved if 10% more people had some college education.
- Community Health Calculator

Visit the [Community Health Calculator](http://countyhealthcalculator.org) and discover how diabetes and mortality could be improved through education and income changes in your community: <http://countyhealthcalculator.org>.

Start Planning for National Health Center Week 2012 *Celebrate Health Centers and Healthier Communities August 5-11, 2012*

The theme for the 2012 National Health Center Week is 'Celebrate America's Health Centers: Powering Healthier Communities' to showcase how health centers are "powering" and "empowering" healthier communities by supporting productive and healthy people. Health centers employ hundreds of thousands of people at more than 8,100 sites serving as community economic engines. The goals of National Health Center Week are to enhance the

visibility of Community, Migrant, Homeless, Public Housing, and School-Based Health Centers and to generate pride and support for the health center program. The National Association of Community Health Centers (NACHC) provides a toolkit and promotional materials for organizations to use for their celebratory activities. Last year, more than 500 health centers hosted more than 1,400 local events during National Health Center Week.

Visit www.healthcenterweek.org for planned activities, materials, and a review of 2011's Health Center Week.

"In the final analysis it doesn't really matter what the political system is...We don't need perfect political systems; we need perfect participation."

- Cesar Chavez

Activate the Community Health Vote *NACHC Introduces New Online Voter Registration Tools*

The National Association of Community Health Centers (NACHC) recently released a new voter registration tool through the Campaign for America's Health Centers (the Campaign). Now, health centers can access the "TurboVote Wizard" on the Campaign's website to facilitate voter registration through an easy step-by-step process. TurboVote connects registrants to their county Clerk and Recorder Office and offers text reminders about upcoming election deadlines. The Community Health Vote project aims to increase civic participation of health center staff, board, volunteers, and clients and increase voter participation in communities through permissible, nonpartisan voter engagement activities. The website offers a pointed message for would be voters: **"Your health center is your health care home where you can get quality care you can afford to protect your health and the health of your family. Your vote is your most powerful tool to protect your health center. That is why health centers are participating in Community Health Vote."** The Campaign also provides a Community Health Vote Toolkit for health centers, state-specific voter registration information, and legal guidelines for health centers to reference in their community activism.

Visit the **Community Health Vote** page on www.saveourchcs.org.



UPCOMING EVENTS – MARK YOUR CALENDARS

MAY

May 30, 2012, 11:00 a.m.-12:30 p.m. MT/12:00 p.m.-1:30 p.m. CT
[BPHC PCMH Information Session](#)
Web Event

JUNE

June 18-21, 2012
[Enhancing Collaborative Management in Community Health Centers: Developing Clinical Operations Teams](#)
Seattle, WA

June 24-27, 2012
[National School-Based Health Care Convention](#)
Albuquerque, NM

AUGUST

August 2-3, 2012
[AUCH Meeting](#)
Provo, UT

August 5-11, 2012
[National Health Center Week](#)
Events Nationally

LOOKING AHEAD

NACHC [Community Health Institute \(CHI\) & Expo](#)
September 7-11, 2012
Orlando, FL

CHAMPS/NWRPCA [Annual Primary Care Conference](#)
October 14-17, 2012
Denver, CO

NACHC [S/RPCA Conference](#)
October 29-31, 2012
Charleston, SC

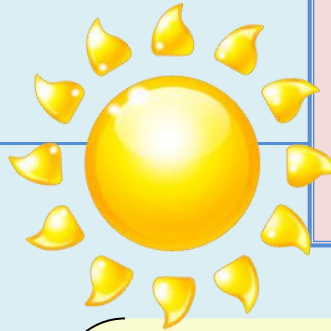
Observances

May
Memorial Day, 5/28

June
Men's Health Week, 6/11-6/17
Flag Day, 6/14
Father's Day, 6/17
Juneteenth, 6/19
Summer Solstice, 6/20

July
Independence Day, 7/4
Ramadan Begins, 7/20

August
Immunization Awareness Month
Ramadan Ends, 8/18



CONTACT US

Please let us know if you would like to sign up for the newsletter or if your email address has changed. Thank you!

Stephanie Booker

Member Services & Programs Coordinator;
stephanie@CHAMPSonline.org,
303-867-9584

Julie Hulstein

Executive Director;
julie@CHAMPSonline.org,
303-867-9582

Shannon Kolman

Clinical Programs Director;
shannon@CHAMPSonline.org,
303-867-9583

Andrea Martin

Workforce Development & Member Services
Director; andrea@CHAMPSonline.org,
303-867-9581



Visit the interactive [online CHAMPS calendar](#) for continuing updates!

Newsletter Contributors:

Stephanie Booker, Julie Hulstein, Shannon Kolman, and Andrea Martin

The CHAMPS Quarterly Newsletter is supported by Grant Number 5 H68CS00150-20-00 from the Department of Health and Human Services (DHHS) Health Resources and Services Administration (HRSA) Bureau of Primary Health Care (BPHC). Its contents are solely the responsibility of CHAMPS and do not necessarily represent the official views of HRSA/BPHC.

Please contact Stephanie Booker with any questions or comments about this newsletter.